

Hafta 3

Microsoft SQL Server Enterprise Manager interface showing the design of the 'dbo.giris' table. The table structure is as follows:

Column Name	Data Type	Allow Nulls
k_ad	bigint	<input type="checkbox"/>
k_ad	nvarchar(50)	<input checked="" type="checkbox"/>
sifre	nvarchar(50)	<input checked="" type="checkbox"/>

The 'k_ad' column is the primary key and identity column. The 'Table Designer' pane shows the following properties for the 'k_ad' column:

- (Name) k_ad
- Allow Nulls: No
- Data Type: bigint
- Default Value or Binding: <database default>

The 'Table Designer' pane also shows the following properties for the table:

- (Name) dbo.giris
- Database: N mail
- Description: <empty>
- Schema: dbo
- Server Name: ilkerunal
- Identity Column: k_ad
- Indexable: Yes
- Regular Data: PRIMARY
- Replicated: No
- Row GUID: C
- Text/Image: PRIMARY

Microsoft SQL Server Enterprise Manager interface showing the design of the 'dbo.mesaj' table. The table structure is as follows:

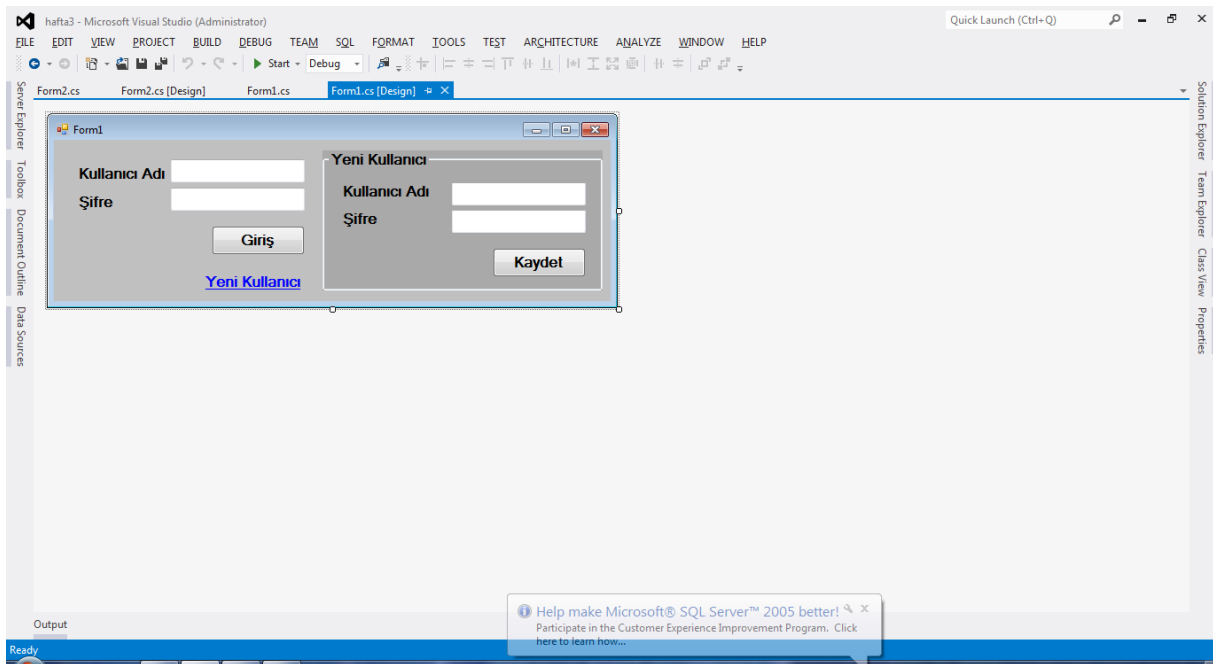
Column Name	Data Type	Allow Nulls
konu	bigint	<input type="checkbox"/>
mesaj	nvarchar(50)	<input checked="" type="checkbox"/>
kimden	nvarchar(MAX)	<input checked="" type="checkbox"/>
kime	bigint	<input checked="" type="checkbox"/>
kime	bigint	<input checked="" type="checkbox"/>

The 'kimden' column is the primary key and identity column. The 'Table Designer' pane shows the following properties for the 'kimden' column:

- (Name) kimden
- Allow Nulls: No
- Data Type: bigint
- Default Value or Binding: <database default>

The 'Table Designer' pane also shows the following properties for the table:

- (Name) dbo.mesaj
- Database: N mail
- Description: <empty>
- Schema: dbo
- Server Name: ilkerunal
- Identity Column: kimden
- Indexable: Yes
- Regular Data: PRIMARY
- Replicated: No
- Row GUID: C
- Text/Image: PRIMARY



```
using System;
using System.Collections.Generic;
using System.ComponentModel;
using System.Data;
using System.Drawing;
using System.Linq;
using System.Text;
using System.Threading.Tasks;
using System.Windows.Forms;
using System.Data.SqlClient;

namespace hafta3
{
    public partial class Form1 : Form
    {
        public Form1()
        {
            InitializeComponent();
        }

        public static SqlConnection baglan = new
SqlConnection("Server=ILKERUNAL;Database=mail;Integrate
d Security=True");
        public static SqlDataAdapter adaptor = new
SqlDataAdapter();
```

```

        public static SqlCommand komut = new
SqlCommand();
        public static DataSet ds = new DataSet();

        private void linkLabel1_LinkClicked(object
sender, LinkLabelLinkClickedEventArgs e)
        {
            groupBox1.Visible = true;
        }

        private void button2_Click(object sender,
EventArgs e)
        {
            komut.Connection = baglan;
            komut.CommandText = "Select Count(*) from
giris where k_adi='" +
                textBox3.Text + "' and sifre='" +
textBox4.Text + "'";
            baglan.Open();
            int say =
Convert.ToInt16(komut.ExecuteScalar());
            if (say==0)
            {
                komut.CommandText = "Insert Into
giris(k_adi,sifre) values('" +
                textBox3.Text + "', '" +
textBox4.Text + "')";
                komut.ExecuteNonQuery();
                groupBox1.Visible = false;
            }
            else
            {
                MessageBox.Show("Bu kullanıcı daha önce
tanımlanmış");
            }
            baglan.Close();
        }

        public static string k_adi="";

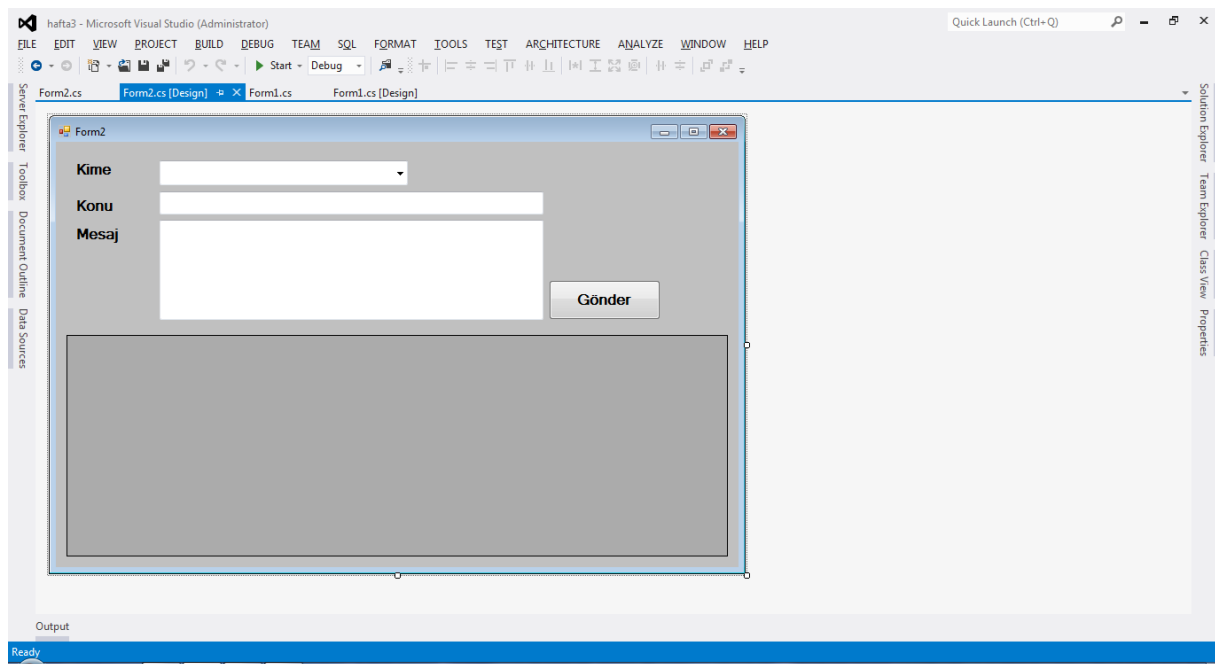
```

```

        public static int id;

        private void button1_Click(object sender,
EventArgs e)
        {
            komut.Connection = baglan;
            komut.CommandText = "Select * from giris
where k_adi='" +
                textBox1.Text + "' and sifre='" +
textBox2.Text + "'";
            SqlDataReader oku;
            baglan.Open();
            oku = komut.ExecuteReader();
            while (oku.Read()==true)
            {
                k_adi = oku[1].ToString();
                id = Convert.ToInt16(oku[0]);
            }
            baglan.Close();
            if (k_adi!="")
            {
                Form2 frm2 = new Form2();
                frm2.Show();
                this.Hide();
            }
            else
            {
                MessageBox.Show("Hatalı Giriş
Yaptınız");
            }
        }
    }
}

```



```
using System;
using System.Collections.Generic;
using System.ComponentModel;
using System.Data;
using System.Drawing;
using System.Linq;
using System.Text;
using System.Threading.Tasks;
using System.Windows.Forms;
using System.Data.SqlClient;

namespace hafta3
{
    public partial class Form2 : Form
    {
        public Form2()
        {
            InitializeComponent();
        }

        private void Form2_Load(object sender,
EventArgs e)
        {
            this.Text = "Hoşgeldin "+ Form1.k_adi;
            kisi_yukle();
        }
    }
}
```

```

        mesaj_goster();
    }

    public void kisi_yukle()
    {
        Form1.komut.Connection=Form1.baglan;
        Form1.komut.CommandText="Select k_adi from
        giris";
        SqlDataReader oku;
        Form1.baglan.Open();
        oku=Form1.komut.ExecuteReader();
        comboBox1.Items.Clear();
        while (oku.Read()==true)
        {
            comboBox1.Items.Add(oku[0].ToString());
        }
        Form1.baglan.Close();
    }

    public void mesaj_goster()
    {
        Form1.adaptor = new SqlDataAdapter("Select
        giris.k_adi,mesaj.konu,mesaj.mesaj from giris,mesaj
        where giris.id=mesaj.kimden and
        mesaj.kime="+Form1.id,Form1.baglan);
        Form1.ds.Clear();
        Form1.adaptor.Fill(Form1.ds,"mesaj");

        dataGridView1.DataSource=Form1.ds.Tables["mesaj"];
    }

    int kime_id;
    private void
    comboBox1_SelectedIndexChanged(object sender, EventArgs
    e)
    {
        Form1.komut.Connection = Form1.baglan;
        Form1.komut.CommandText = "Select max(id)
        from giris where k_adi='" +

```

```

        comboBox1.SelectedItem + """;
        Form1.baglan.Open();
        kime_id =
Convert.ToInt16(Form1.komut.ExecuteScalar());
        Form1.baglan.Close();

    }

    private void button1_Click(object sender,
EventArgs e)
    {
        Form1.komut.Connection = Form1.baglan;
        Form1.komut.CommandText = "Insert Into
mesaj(konu,mesaj,kimden,kime) values('" +
        textBox1.Text + "',''" + textBox2.Text +
        "',''" + Form1.id + "',''" + kime_id + "')";
        Form1.baglan.Open();
        Form1.komut.ExecuteNonQuery();
        Form1.baglan.Close();
        mesaj_goster();
    }
}
}
}

```